

# *CNP-VTWI User Manual*

## Contents

1. Product Introduction-----	1
1.1 Features-----	2
1.2 Packing Contents-----	2
1.3 Hardware and Button Introduction-----	3
1.4 LCD Description-----	4
2. Installation-----	5
2.1 Installing Skype Software-----	5
2.2 Installing the API Software-----	5
2.3 Hardware Installation-----	7
2.4 Setting Audio and Sound Device-----	8
3. Function Instruction-----	9
3.1 Power Up-----	9
3.2 Power Down-----	9
3.3 Basic Operation and Option-----	9
3.4 Calling a Skype User-----	10
3.5 Calling a Phone Number (Skype Out)-----	10
3.6 Answer a Call-----	10
3.7 Adjust Volume-----	10
3.8 Assign Speed-Dial-----	10
4. API Program Instruction-----	11
4.1 About-----	12
4.2 Exit-----	12
5. Battery Power Recharge-----	12
6. Other Internet Messenger Software Setting-----	12
6.1 MSN Messenger-----	12
6.2 Yahoo Messenger-----	13
7. FAQ -----	13
8. Specification-----	15

## 1. Product Introduction

Wireless Bluetooth VoIP Phone (CNP-VTW1) is a wireless Skype™ phone, which allows you to make and receive Skype calls from a handset without being confined to a PC. The Skype services provided on the PC are now moved to the LCD Display-equipped handset. The regular PC-to-PC Skype calls, SkypeOut™ calls, Skype-In™ calls, and features including Contact list browsing, miss-call lists, call histories, Hold, Profile viewing, are provided. Besides, the echo-eliminating technology improves the voice quality. CNP-VTW1 also can be used as the handset when talking through MSN Messenger™ and Yahoo Messenger™. Once correctly installed, you are able to use this phone anywhere in a home or office like a mobile phone, as long as it is within the proximity of 30 meters from the PC, which runs Skype.

### 1.1 Features

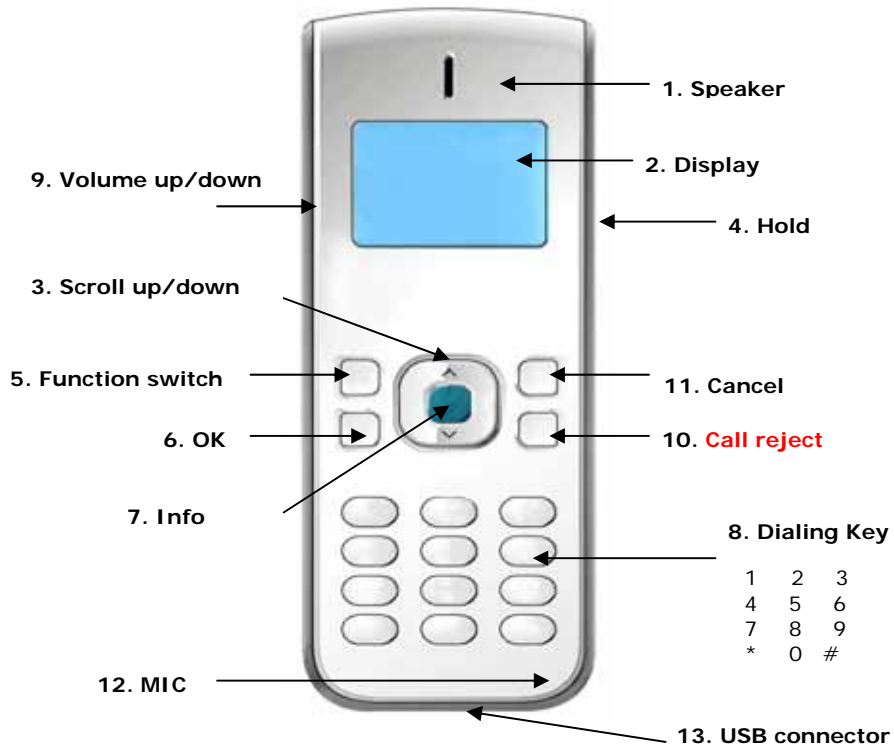
- ⌚ Good immunity to other 2.4GHz RF interference
- ⌚ Bluetooth 1.2 compliant with Adaptive Frequency Hopping
- ⌚ 25-30 meters from PC
- ⌚ Friendly call handling and operation by LCD display and function keys
- ⌚ Stylish mobile handset design, comfortable to use and carry
- ⌚ Concurrent Contact list, Missing call list, and Call history as in PC
- ⌚ Support Skype
- ⌚ Implement Echo-elimination technology for quality sound
- ⌚ Built-in Li-Ion battery for up to 6 hours talking time and 3 days standby time.
- ⌚ 5 types of hold music and 10 types of ringers

...

### 1.2 Packing Contents

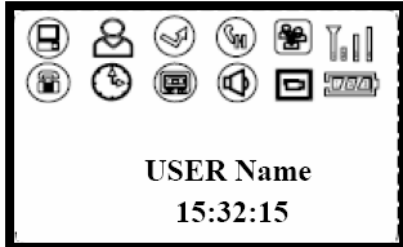
Wireless Bluetooth VoIP phone x1  
USB Bluetooth Cradle x 1  
Installation CD x 1 (API Software and user manual)  
USB Cable x 1  
User Manual

### 1.3 Hardware and Button Introduction







1	Speaker	Speaker	
2	LCD Screen	Display information of Skype	
3	Scroll Up/Down	Select list of contact list, missed call list, called list	
4	Hold	Hold the Skype call	
5	Function	Switch contacts/dial/history of skype function	
6	OK	Answer	make or answer a call (Power on)
		Enter	sub-menu entering
		Confirm	for option setting
7	Info	Skype friends Profile like Cell phone number ...etc	
8	Digits Keys	Skype out dialer button	
9	Volume up/Down	Adjust Volume Up and Down	
10	Call reject	Hang up a call (Power off)	
		Escape sub-menu	
11	Cancel	Press & hold to delete all dialed numbers	
		Press to delete one dialed number	
12	Microphone	Microphone	
13	Mini USB	MiniUSB Jack to connect to PC USB for power recharge	





## 1.4 LCD Description



### Device Status Icon

	Show Call List User Online status
	Voice mail indicator(reserved for future)
	RF signal strength indication
	Battery meter

### Device Function Icon

Icon	Meaning	What users can do
	Shows Contact List Username/Alias	<ol style="list-style-type: none"> <li>1. Press "<b>Scroll Up/Down</b>" to select whom to contact</li> <li>2. Press "<b>Info</b>" key to display the Contact's profile</li> <li>3. Press "<b>OK</b>" key to make a call to the contact</li> </ol>
	Shows Missed call list User name/Alias	<ol style="list-style-type: none"> <li>1. Press "<b>Scroll Up/Down</b>" to select whom to contact</li> <li>2. Press "<b>Info</b>" key to display the Contact's profile</li> <li>3. Press "<b>OK</b>" key to make a call to the contact</li> </ol>
	Shows Call List Username/Alias	<ol style="list-style-type: none"> <li>1. Press "<b>Scroll Up/Down</b>" to select whom to contact</li> <li>2. Press "<b>Info</b>" key to display the Contact's profile</li> <li>3. Press "<b>OK</b>" key to make a call to the contact</li> </ol>
	Handset Setting	<ol style="list-style-type: none"> <li>1. Volume setting: 7 levels</li> <li>2. Calls ringtone</li> <li>3. Hold ringtone</li> <li>4. Key tone</li> <li>5. Ring volume</li> <li>6. Standby mode</li> </ol>

## 2. Installation

### 2.1 Installing Skype Software

If Skype is not yet installed on your computer, please download the latest version of the software from <http://www.skype.com>

Double-click the installation file you downloaded and then follow the on-screen prompts to complete the installation.

If you have any installation problem about Skype, please refer to Q&A on Skype Website.

### 2.2 Installing the API Software

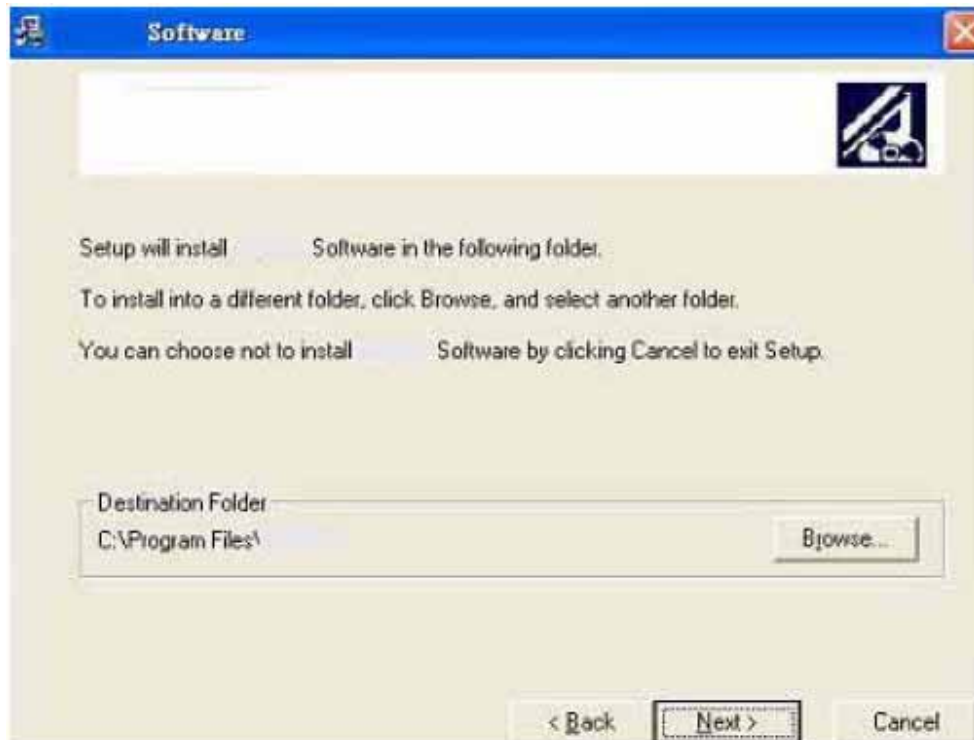
- (1) Install the Utility CD into your CD-ROM drive; you will see an Autorun display.
- (2) Click the “Install Driver” to start the installation.



- (3) Follow the pop-up window and click “next”







- (4) Continue next window and Click “Next”. Or if you want to change the driver folder, click “browse”, and designate the folder you want, and then click “Next”.



- (5) Click Finish button to complete installation.



- (6) Now the driver installation is completed. Please take a look at the small icon located at the Window System Tray, which is at the right-bottom corner of desktop screen. The icon indicates the status of the Bluetooth VoIP phone.

	Bluetooth VoIP Phone On line
	USB Bluetooth cradle is not connected
	Skype not talk to SkyWin driver
	Skype Not Installed on PC

For example, if your USB Bluetooth cradle is not yet inserted into USB port, the above second icon will appear. Please continue with next step.

### 2.3 Hardware Installation

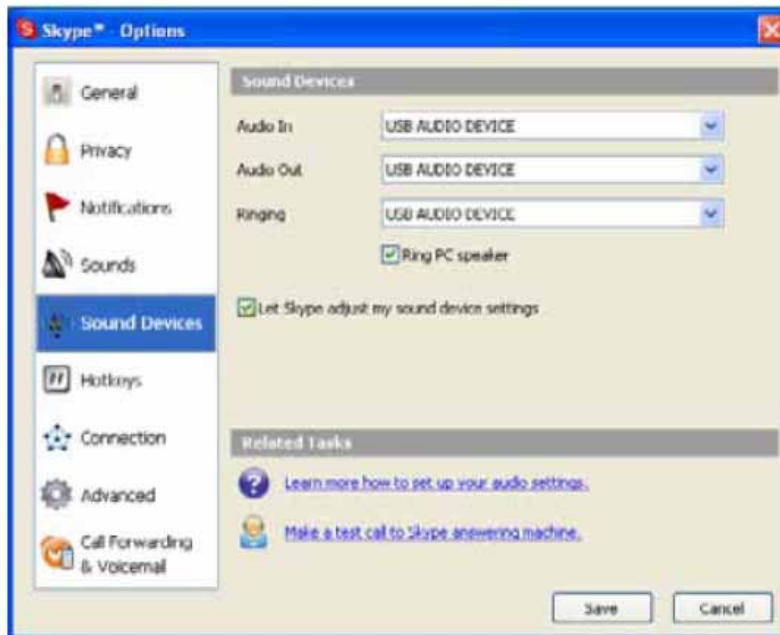
First, you may want to select a USB port on your PC. Make sure there are no metallic stuffs surrounding the USB port at close proximity. This may hinder RF signal from transmitting. Then insert the USB Bluetooth cradle into USB port. After a few seconds, you will see the blue LED on the USB Bluetooth cradle flashing at a frequency of 2-3 seconds. Meanwhile, the following pop-up window will appear on your PC screen. You may select either “Allow this program to use Skype”, or “Allow this program to use Skype, but ask again in the future”. And then click “OK”.



If you select “Allow this program to use Skype”, you will not see this pop-up screen appear again next time when you re-install the driver.

## 2.4 Setting Audio and Sound Device

Open Skype window, click **Tools** **Options** **Sound Devices**. In the items “Audio In” and “Audio Out”, please select “USB AUDIO DEVICE”, then click **Save**.



This will make sure that PC will not mix the Skype Phone with other Sound devices

## 3. Function Instruction

### 3.1 Power Up

By pressing the “**OK**” button for a couple of seconds, the Bluetooth VoIP phone will power up, showing all the icons, and clock.

### 3.2 Power Down

By pressing the “**Call reject**” button for a couple of seconds, the Bluetooth VoIP phone will power down.

### 3.3 Basic Operation and Option

In clock mode, pressing “**OK**” will display the Skype table. Users may press the “**Call reject**” to quit. Press “**Up**” or “**Down**” arrow to browse the Skype table. Press the “**OK**” button to enter the table; Users may exit the table by pressing “**Call reject**” button. The following table describes the Contents in the Skype table.

CONTACT			Contact list
MISS LIST			Missed Calls
CALL LIST			Calls list
OPTION	VOL SET	1~7	7 level volume adjustment
	Calls Ring	1~10	10 melodies
	Hold Ring	RING 1~5	5 types of ringers
		RING mute	Mute
	KEY TONE	TONE OFF	Turn off key tone
		TONE ON	Turn on key tone
	Ring volume	1~3	3 types of rings
Standby mode	ON/OFF	ON/OFF	

### 3.4 Calling a Skype User

While the Contact, Miss list, or Call list in the Skype table.

You may press “**Up**” and “**Down**” key to scroll the list. Then press “**OK**” key to dial for target user via Skype.

If you want to cancel the dialing, you may press “**Call reject**”.

### 3.5 Calling a Phone Number (SkypeOut)

Before starting to use this function, please make sure you have paid for the service. Further information about Skype Out, please go to web <http://www.skype.com/>. Dial the phone number by pressing the Digit keypads. Press the “**OK**” to call the number. Please note that all the telephone number dialed in SkypeOut service shall be pre-fixed by “00” and destination “Country Code”. Namely, the digit strings shall contain “00 + Country Code + Area code + phone number”.

### 3.6 Answer a Call

When the Bluetooth VoIP Phone is ringing for an incoming call, press “**OK**” to answer it.

### 3.7 Adjust Volume

Use “**Volume Up/Volume Down**” button to control the volume while calling.

### 3.8 Assign Speed-Dial

Open Skype window, right-click the user name on the contact list and select Assign Speed-Dial.



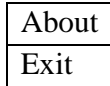
Set speed dial number, example “11” and press “**OK**”



Press number “11” on CNP-VTW1, this number will be shown on the LCD screen, then press “**OK**” on Bluetooth VoIP Phone to call out.

#### **4. API Program Instruction**

Right-click the CNP-VTW1 icon in the System Tray, there are two items on the list.



##### **4.1 About**

The window shows the information of API.

##### **4.2 Exit**

To quit the API program.

#### **5. Battery Power Recharge**

Connect the Bluetooth VoIP phone into USB Bluetooth cradle or into Mini-USB ,and connect the other end of USB cable into a PC's USB port. The VoIP phone will start to charge the power. It will take 3-4 hours to fully charge the handset.

## 6. Other IM Software Setting

### 6.1 MSN Messenger

Open MSN Messenger window, Click Tools      Audio and Video Setup. Follow the installation wizard, select USB AUDIO DEVICE as audio device and test.



### 6.2 Yahoo Messenger

Open Yahoo Messenger, Click Action      Call Setup. Follow the installation wizard, select USB AUDIO DEVICE as audio device and test.



## 7. FAQ

Q1. Skype is installed and works well without the CNP-VTW1. But it has no response when I first install the CNP-VTW1 and press any key of the VoIP phone does not help.

**Answer:** 1. Make sure the USB Bluetooth cradle is plugged into a USB port of PC  
2. Make sure the VoIP phone is powered up

Q2. The USB Bluetooth cradle has been plugged into a USB port of a PC. But the blue LED keeps on flashing

**Answer:** Make sure you have powered up the handset. If the handset has been powered up, but the LCD on the cradle still keep on flashing, the handset and cradle are not communicating. Make sure there is no other Bluetooth dongle the VoIP is trying or has pair up with. Then power up the handset again.

Q3. The VoIP phone has been synchronized with the USB Bluetooth cradle (with LCD steady), but the clock on the VoIP phone ticks from 00:00:00, not at the same time of date as PC's.

**Answer:** Check the CNP-VTW1 icon on the System tray. If "USB Bluetooth cradle not connected", re-insert the USB cable of cradle again. If it is "Skype does not talk to CNP-VTW1 driver", you may un-install the driver, and install again, following the steps in this manual. If "Skype not installed on the PC" appears, you shall install it.

Q4. How to un-install the SkyWin driver?

**Answer:** go to PC's "Console" (Start->Setting->Console), select "Add or Remove program", then click "CNP-VTW1". And click the program removal.

Q5. When you try to browse through the Contact list, the LCD display shows "Contacts". But you cannot go any further to the detailed list.

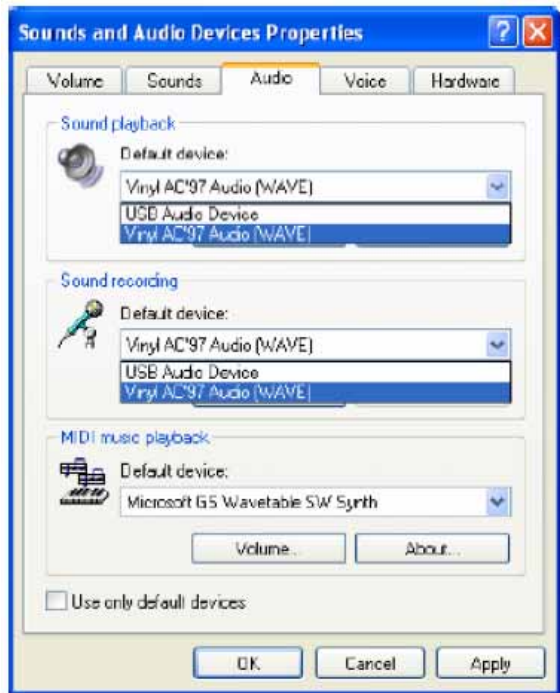
**Answer:** Make sure the Skyphone is ready (the CNP-VTW1 icon on the System tray is "Skyphone online"). If yes, wait several seconds will help. Occasionally the wireless transmission may become slow due to traffic congestion. If otherwise, please refer to Q3..

Q6. While using Skype or Messenger software, the voice is coming from PC instead of from handset

**Answer:** Make sure you have configured the Phone as USB Audio Devices. Refer to **2.4 Setting Audio and Sound Device** and **3.7 Adjust Volume**. In addition, please also refer to **6.1 MSN Messenger setting** in MSN Messenger,

Q7. There is no voice coming out when play music?

**Answer.** Please go to PC's **Control Panel Sound and Audio Devices**, set the default device of **Sound playback** and **Sound Recording** to PC sound card, it shown as below:



Q8. The other end cannot hear my voice when in Skype calls.  
**Answer:** Check if your Handset is muted.

## 8. Specification

Support OS	Window 2000 / XP
Interface	USB 1.1
Audio Frequency	100 Hz to 15KHz
Signal / Noise Description	90 dB
Power Requirement	USB Powering
Current Consumption	Active mode: 140 mA Silent Mode: 45 mA Standby mode: 9 mA Inactive: 0.3mA
Wireless Technology	Bluetooth 1.2 with AFH
RF Frequency	2.4-2.4835GHz
Transmit power	16 dBm
Receive Sensitivity	-80dBm
Max. number of Contact list, Miss list, Call record	Unlimited, as on PC
Phone call types	PC-to-PC (Skype), PC-to Phone (Skype Out)
Other IM/Internet phone support	Yahoo! Messenger, M/S MSN
Function Keys	M(Information), Power on/off , Clear, Hold, Off-hook, On-Hook, Volume Up, Volume Down, Up, Down
Audio devices	Ringer: Buzzer Microphone Speaker
System Reset	Reset button
Battery	Rechargeable Li-Ion 700 mAh
Battery Indicator	Low power, Charging, and capacity icon on LCD
RF Signal indicator	RSSI with 4 level icon on LCD
LCD	10 Icons and 128 x 32 dot-matrix mono LCD
Operate Temperature	0 to 40
Storage Temperature	-10 to 60
Operate Humidity	< 90 %
Storage Humidity	< 95%
Dimension	125 x 45 x 15mm
Weight	75 (Handset with Battery)