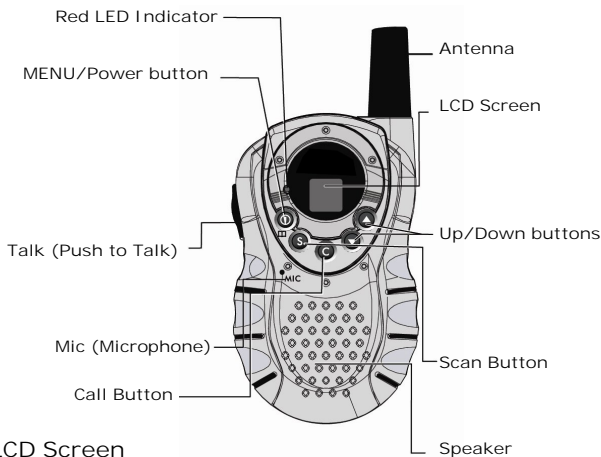


# CANYON Two-Way Radios

Article: CNR-WT3

USER MANUAL v1.0



## 1. LCD Screen



**8** Channel Number

**2** Speaker volume level

**TX** Transmitting a signal

**RX** Receiving a signal

**L** Power Low indicator

## 2. Fitting the batteries

Your Walkie-talkie includes a rechargeable battery pack for each handset.

Step 1 To remove the belt clip

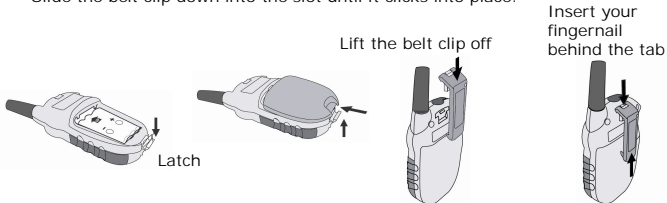
1. It's easier to fit the battery pack without the belt clip in place.
2. Pull the tab forward (away from the handset) to release the belt clip. Then lift the belt clip off.

## Step 2 To fit the batteries

1. Open the locking latch and slide off the battery compartment cover.
2. Insert the rechargeable battery pack as shown.  
\* Make sure the 'UP' arrow is showing, and pointing towards the top of the handset.
3. Replace the cover and close the latch.

## Step 3 To replace the belt clip

Slide the belt clip down into the slot until it clicks into place.



### \* IMPORTANT

Read these safety warnings before you charge the batteries.

1. When placing the handset in the charger, use only the rechargeable battery pack supplied with the walkie-talkie.
2. Don't try to fit or recharge non-rechargeable batteries.
3. Make sure the battery compartment cover is securely locked in place when you're charging the batteries.
4. Dispose of used batteries safely and in a way that will not harm the environment - never try to burn them or put them anywhere they could get burnt or punctured.
5. When you're not going to use your walkie-talkie for a few weeks, take the battery pack out so it doesn't leak corrosive substances.
6. When the battery charge level gets low, an alert tone will be heard and the RED LED indicator will flash once every 15 seconds. When this happens, recharge the batteries.
7. Don't leave dead batteries in your handset - they might leak if you do.

## 2.1 Charging the batteries

If you prefer to wall mount the charger, use the template supplied.

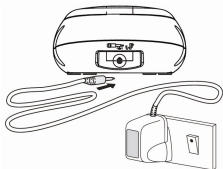
Step 1 Connect the mains power lead to the charger.

Step 2 Plug the mains adapter into a 230 V AC, 50 Hz mains socket, with the switch on the socket set to OFF.

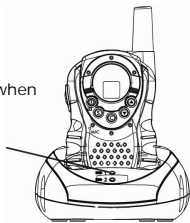
Step 3 Then switch on at the mains socket.

\* The walkie-talkie must be used with the mains adapter supplied.

Step 4 Place the handsets in the charging cradles.



The charge light comes on when a handset is in the cradle



#### □ Battery Meter

- The PMR can detect when the battery charge level gets low.
- An alert tone will be heard and the RED LED indicator will flash once every 15 seconds. When this happens, put it on the handset to charge pod and check the charge LED light.
- It takes about to recharge the batteries fully if they've become completely run down. New batteries can take up to 14 hours to charge fully.

#### Battery life

- The walkie-talkie units have a built-in Power Saver (PS) for maximum battery life, but when not in use, turn the unit OFF to conserve battery power.
- Remove the batteries if the units will not be used for a long period of time.

## 3. Operation

### 3.1 Turning the Unit ON/OFF

1. To Turn ON - Press and hold the Power button. A special "beep" sound will be heard and the LCD Screen will display the current channel.
2. To switch OFF - Press and hold the Power button. A special "beep" sound will be heard and the LCD Screen will turn blank.

### 3.2 Adjusting the Speaker volume

There are 8 volume levels. To adjust the speaker volume, press the UP button to increase, or press the DOWN button to decrease. The LCD Screen will show the digital speaker volume level during adjustment.

### 3.3 Receiving a Call

The unit is continuously in Receive mode when the unit is turned ON and not transmitting. When a signal is received on the current channel, the receive signal icon "RX" will be displayed on the LCD Screen.

### 3.4 Transmitting (sending)

1. Press and hold the TALK (Push to Talk) button to transmit your voice. The transmit signal icon "TX" will display on the LCD Screen and the RED LED indicator will light.
2. Hold the unit in a vertical position with the Mic (Microphone) 5-10 cm away from

the mouth. While holding the TALK button, speak into the mic (microphone) in a normal tone of voice.

3. Release the TALK button when you have finished transmitting.

**\* Important**

1. In order to receive your transmission, other people must also be on the same channel that you are currently using. Refer to the "Changing Channel" section for more information.
2. When the TALK and/or CALL buttons are continuously pressed, your PMR cannot receive any transmissions.

### 3.5 Calling (Paging) Tone

You can use the CALL button to send a tone to other users on the same channel.

To activate this feature -

With the PMR in normal mode, press and release the CALL button. The unit will transmit a 2-second page tone to the other unit/s set with the same channel within transmitting range.

### 3.6 Channel Scan

Channel scan performs a search for active signals in a continuous loop from channels 1 to 8. This allows you to find other radios without having to manually change to each channel.

To activate this feature -

1. Press and hold down the SCAN button. The channel number on the LCD Screen changes rapidly until an active signal is detected.
2. When an active signal (one of the 8 channels) is detected, the channel scan pauses on the active channel until the active signal stops.
3. If you press the TALK button while the scan is paused on an active channel the unit will communicate through the active signal channel, and the channel scan will be deactivated. (OR press the UP button to continue the channel scanning.)
4. If no action is taken before the detected signal stops then the scan will continue.
5. Press and hold the SCAN button to stop the channel scanning operation. The unit will return to the channel set before the scan was started.

### 3.7 The Menu Functions

#### 3.7.1 Changing Channels

The PMR has 8 available channels. To change channel -

1. Press the Menu button once, the Channel icon "8" will start blinking on the LCD Screen.
2. While the Channel icon is blinking, press the UP or DOWN button to select the desired channel. The channel changes from 1 to 8, or from 8 to 1.
3. Press the TALK button again to confirm your selected channel.

#### 3.7.2 TX Power High/Low setting

This feature permits the selection of the transmitting power level to high or low. At Power High, the PMR will transmit at maximum power and at a longer transmission range.

1. Press the Menu button twice.
2. Press the UP or DOWN button to select High or Low. The LCD Screen will display "L" when the low power is selected. At low power mode, the PMR will transmit at reduced transmitting range but could extend the battery life.
3. Press the TALK button again to confirm your selected power level.

### 3.7.3 Monitor

You can use the Monitor feature to check for weak signals on the current channel.

1. Press the Menu button 3 times. The PMR will enter the Monitor mode and hear everything on the current channel.
2. Press the (Menu) button again to turn off the Monitor operation and return to standby mode.

## 4. Auxiliary Features Channel Frequency Table

### 4.1 Power Saving

Your PMR unit has special circuitry designed to extend the life of your battery. When the unit is not used for 6 seconds, it will automatically switch into a low power mode. The Power Saving feature does not affect the PMR's ability to receive transmissions. When a signal is detected, it automatically returns to full power mode.

### 4.2 Low Battery Indicator

The PMR can detect when the battery charge level gets low. An alert tone will be heard and the RED LED indicator will flash once every 15 seconds. When this happens, replace the batteries.

### Channel Frequency Table

Channel	Frequency (MHz)	Channel	Frequency (MHz)
1	446.00625	5	446.05625
2	446.01875	6	446.06875
3	446.03125	7	446.08125
4	446.04375	8	446.09375

### Troubleshooting Guide

Symptom	Solution
No power.	<ul style="list-style-type: none"> <li>◦ Check the batteries are installed properly.</li> <li>◦ The batteries may be weak.</li> <li>◦ Replace the old batteries with new ones.</li> </ul>
Reception is weak.	<ul style="list-style-type: none"> <li>◦ Press the UP button to increase the receiver volume level.</li> <li>◦ The receiving signal may be weak and/or out of range.</li> </ul>

Cannot change channels.	<ul style="list-style-type: none"> <li>◦ To change channels, press the Menu button once then press the UP or DOWN buttons to change the current channel.</li> <li>◦ Batteries may be weak.</li> </ul>
Range is limited.	<ul style="list-style-type: none"> <li>◦ Batteries may be weak.</li> <li>◦ Replace with new batteries if the battery charge level is low. (The RED LED indicator is flashing once in every 15 seconds.)</li> <li>◦ The maximum range will vary depending on terrain and environment, and depending on the TX power high/low setting.</li> <li>◦ Open fields provide the maximum range, while steel/ concrete structures, heavy foliage, and use in buildings and in vehicles may limit the range significantly.</li> <li>◦ Wearing the radio close to the body, such as in a pocket or on a belt, will decrease range; change the location of the radio.</li> </ul>
Sound distortion problems.	<ul style="list-style-type: none"> <li>◦ If you are transmitting, speak in a normal tone of voice, 5 cm away from the Mic (microphone.).</li> <li>◦ If you are receiving, lower the volume to a comfortable level.</li> <li>◦ Radios too close. Radios must be at least 1.5 meters apart; increase your distance.</li> <li>◦ Radios too far apart. Obstacles interfere with transmission. Talk range is up to 3 Km in clear unobstructed conditions.</li> </ul>