

*Hi-Speed USB 2.0 Flash Drive*

*User Manual for*

*USB Disk Pro*

Ver 1.00

## New Features

1. Allows user to set own password. (*maximum 16 characters*)
2. Allows user to enter “Password Hint”, in case user forgot about their password
3. Automatically format the “Protected” part of the USB Disk Pro when enter wrong password 6 times.
4. New “Format” function, allows user to define the capacity of the protected area.

## ***IMPORTANT***

- **System Support**

Windows 98SE/ME/2000/XP

Please download Windows 98SE driver from [www.canyon-tech.com](http://www.canyon-tech.com)

1. When using USB Disk Pro with the security application program, only **ONE** USB Disk Pro is allowed at once. **DO NOT PLUG IN TWO OR MORE USB DISK PRO AT THE SAME TIME.**

## Main Screen



**A** Set up / Change password

**B** Disable / Remove password

**C** Unlock Device

**D** Password Status – tells you whether a password has been set up or not

**E** Device Status – tells you whether the device is locked or unlocked

**F** Forgot Password ? – don't worry, let password hint remind you

**G** Configure Size – allow user to set the capacity of the “protected” area

## 1. Setup Password

(1) Press “Set Password” to setup password, and you will see the following screen



(2) Enter a password of your choice. (maximum 16 characters long)

(3) Confirm password by re-enter the password you set in (2).

(4) Enter a password hint of your own, in case you forget your password. You can enter anything you want within 31 characters.



PS : Tick “Show Password” box to see what you are typing or what you have entered

(5) Press “Apply” to confirm changes. You will see the following message window pop up.

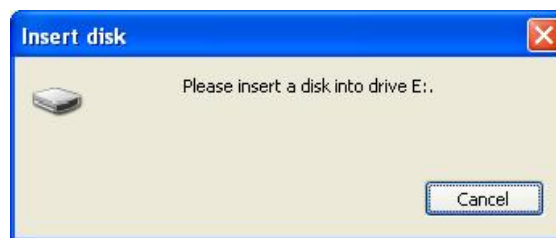
This message window tells you that the device will be automatically locked after you remove the device from USB port.



(6) Once you have set up the password correctly, you will notice the change in “Password Status”.



**NOTE** When you remove the device from USB port and re-insert it again, the device will automatically be locked. If you try to access it, it will reply with some error message. (depending on the operating system, the error message will be different)



If you execute the Security AP, you will see that the device is LOCKED.



## 2. Change Password

- (1) If you have already setup a password before, you can change the password you set. Click “Change Password” to change.



- (2) Enter your old password  
(3) Enter new password of your choice  
(4) Confirm the new password by re-enter  
(5) Change password hint if you wish.

PS : (i) Password Hint does not have to be entered/changed. If you don't want to change it, you can use the old hint.

(ii) Password Hint can only be edited with new password.

ie : Password Hint can not be edit/change without change of password.



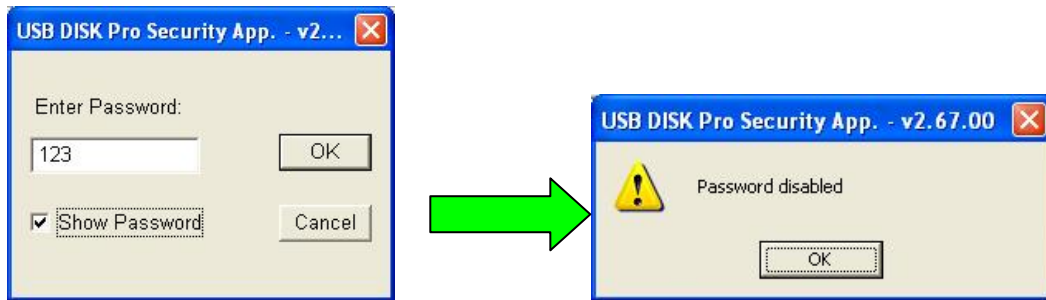
(iii) Use “Show Password” to see what you have typed.

### 3. Disable / Remove Password

(1) If you no longer want to use the password, select “Disable Password” to remove it.



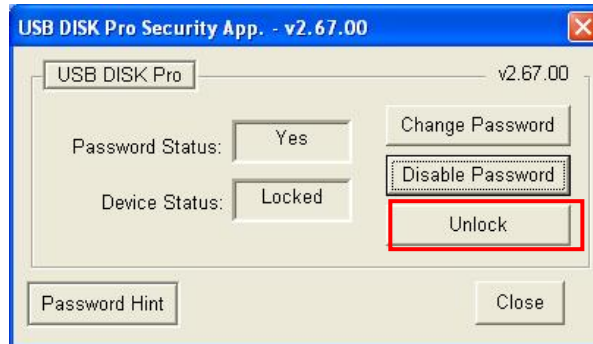
(2) Enter your password.



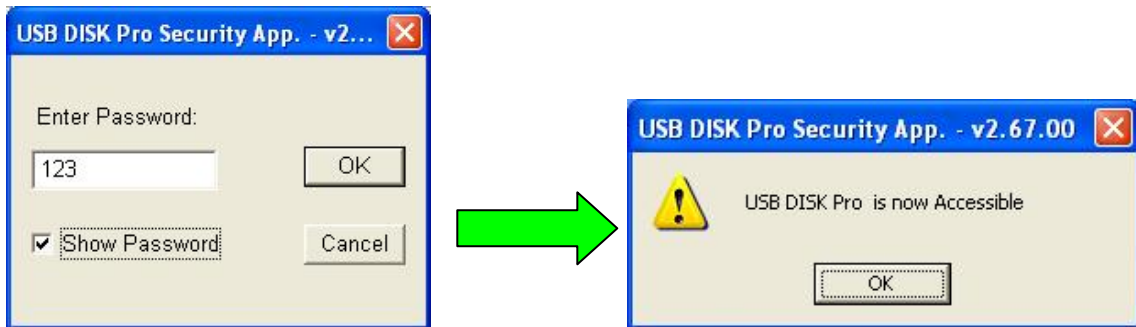
**You only have SIX chances to enter password correctly. If you enter wrong password six times, it will automatically FORMAT the “protected” area of your SecurePenDrive. (All data will be lost)**

#### 4. Unlock Device

- (1) If you have setup a password, you must “Unlock” first. (enter password) before you access the data on the protected area, Select “Unlock” to enter password.



- (2) Enter your password.

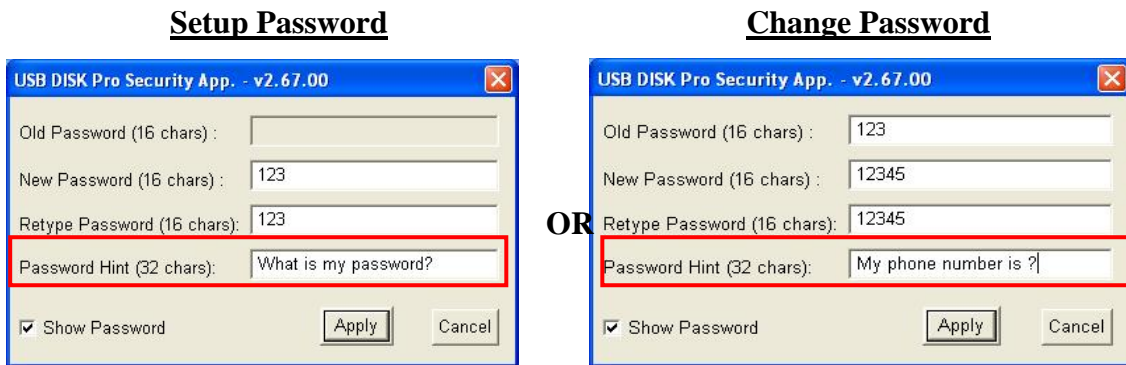


**You only have SIX chances to enter password correctly. If you enter wrong password six times, it will automatically FORMAT the “protected” area of your SecurePenDrive. (All data will be lost)**

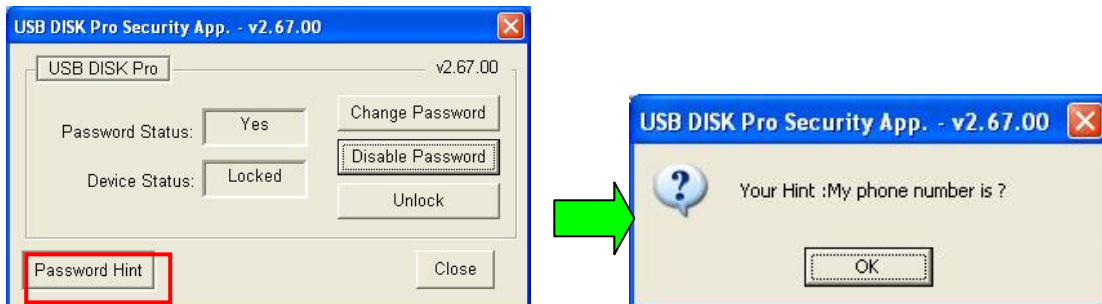
## 5. Password Hint

When you setup/change your password, you can also edit a “Reminder” of your choice, in case you forget your password.

- (1) Enter a hint of your choice. (maximum 31 characters long)



- (2) Press “Password Hint” any time to get your reminder.



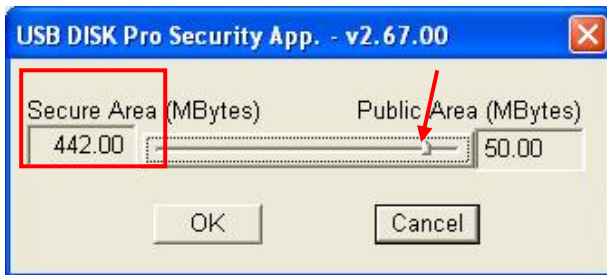
## 6. Format



- (1) Press “Configure Size” to adjust the capacities of the PenDrive.

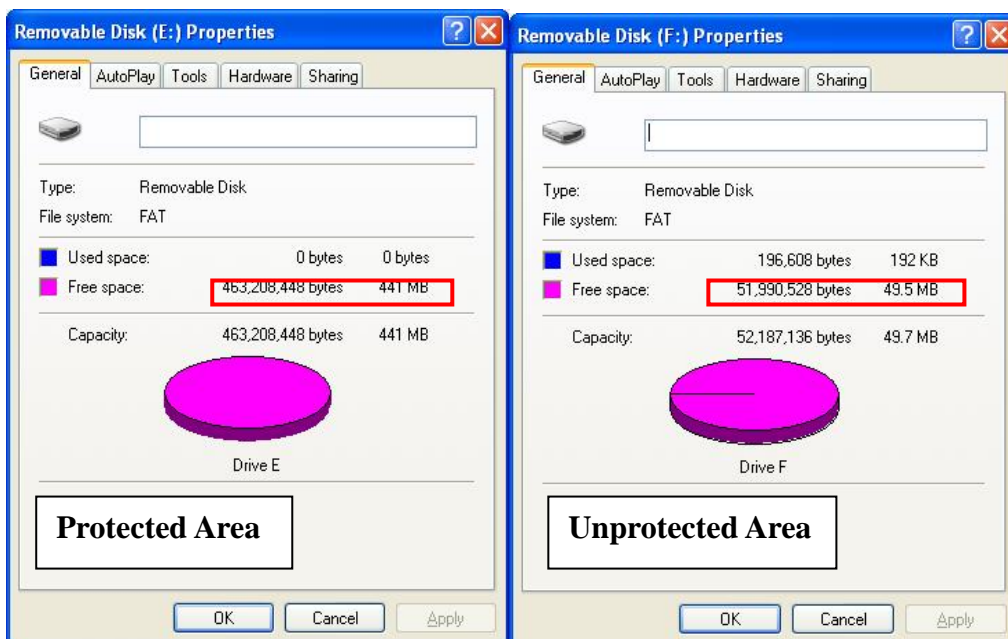


- (2) A warning message will show, telling user that whether you want to proceed with formatting, any data on the PenDrive will be lose.



- (3) Drag the bar to adjust the capacity of the “Protected” area.

**eg:** In this case, the protected area is a bit over 442MB and the unprotected area will be what ever is left. (as shown below)



## **Disclaimer**

All the information in this document is subject to change without prior notice. The manufacturer makes no representations or any warranties regarding the contents of this manual. The information contained in this manual is provided for the general use by the customers. No part of this user manual may be transmitted, reproduced, or changed In any form by any means without the express written permission of the manufacturer. All brand names and product names used in this document are trademarks or registered trademark of their respective holders.

If you have any questions, please contact your merchant or our service center for clarification. Read the contents of this manual before operating the product. We are not responsible for any losses resulting from using this product no matter what the reason. Please keep your password in a safe place. If you lose the password, we are not responsible of any lost data.